

LIST OF FUNGI

Exhibited by E. Cheel (See p.159).

AGARICACEÆ.

Lepiota dolichaula Berk. & Br.—Centennial Park (on sandy soil; E. Cheel; November, 1901; No. 8). Previously only recorded from Queensland.

Laccaria laccata Berk.—Belmore (on the ground; E. Cheel; July, 1906; No.9).

Lentinus subnudus Fr.—Penshurst (on the ground; E. Cheel; May, 1901; No.12). Previously recorded from South Australia, Victoria, and Queensland.

Lentinus strigosus Fr.—Peakhurst (on dead wood; E. Cheel; September, 1902; No.14).

Pleurotus Cheelii Masee, Kew Bull. 1907, p.122.—Eden, near Twofold Bay (on dead branches; E. Cheel; December, 1903; No.7).

Xerotes nigrita Led.—Peakhurst (on dead wood; E. Cheel; October, 1901; No.22). Not previously recorded for Australia.

Schizophyllum commune Fr.—Centennial Park (on trunks of various trees; E. Cheel; August, 1906; Nos. 13 and 42): Leura Falls, Katoomba (A. A. Hamilton; December, 1902): Smoky Cape near Trial Bay (F. W. Raffills; October, 1905).

LYCOPERDACEÆ.

Geaster plicatus Berk.—Centennial Park (on sandy soil; E. Cheel; December, 1900).

Geaster vittatus Kalch.—Botanic Gardens, Sydney (on the ground; E. Cheel; December, 1902).

Geaster saccatus Fr.—Woy Woy (on the ground; Miss M. Flockton; April, 1907).

Lycoperdon australe Berk., forma *major* Masee.—Centennial Park (on sandy soil; E. Cheel; March, 1901; No.11). Not previously recorded.

Lycoperdon lilacinum Berk.—Penshurst (on the ground; E. Cheel; August, 1906).

POLYPORACEÆ.

Polyporus eucalyptorum Fr.—Botanic Gardens, Sydney (E. Cheel; October, 1904). Previously recorded from Gerogery (these Proceedings, 1899, p.447).

Fomes annosus Fr.—Smoky Cape near Trial Bay (F. W. Raffills; October, 1905; No.38). Previously recorded only from Queensland.

Fomes australis Fr.—Centennial Park (on decaying stump; E. Cheel; September, 1901): Smoky Cape near Trial Bay (F. W. Raffills; October, 1905; No.39).

Polystictus sanguineus Mey.—Glenorie (on dead branches of *Melaleuca*; E. Cheel; June, 1903): also Belmore: Smoky Cape near Trial Bay (F. W. Raffills; October, 1905; No.6).

Trametes lactinea Berk.—Kahibah near Newcastle (on fence rails; E. Cheel; September, 1904; No.2).

Hexagonia tenuis Fr.—Peakhurst (on trunk of tree; E. Cheel; July, 1901; No.20). Not previously recorded for New South Wales.

HYDNACEÆ.

Hydnum alutaceum Fr.—Botanic Gardens, Sydney (on dead branches; E. Cheel; July, 1906; No.27). Previously only recorded from Victoria.

THELEPHORACEÆ.

Thelephora pedicellata Schwein.—Carlton (on the ground; A. Green; December, 1902): Botanic Gardens, Sydney (E. Cheel; April, 1903; No.33). Not previously recorded for New South Wales.

Thelephora Archeri Fr.—Centennial Park (on sandy swampy land; E. Cheel; December, 1900; No.30). Not previously recorded for New South Wales.

Stereum lobatum Fr.—Galston (on trunks of trees; E. Cheel; June, 1903): Bulli Pass (E. Cheel; March, 1907).

Cyphella australiensis Cke.—Centennial Park (on dead branches of jasmine; E. Cheel; July, 1901; No.21). Previously only recorded for Victoria.

TREMELLACEÆ.

Hirneola polytricha Mont.—Botanic Gardens, Sydney; on decaying branches of various trees; E. Cheel; March, 1903): Woy Woy (Miss M. Flockton; April, 1907; No.15).

Guepinia spathularia Fr.—Penshurst (on decaying log; E. Cheel; October, 1904, No.34).

PHALLOIDEACEÆ.

Aseröe rubra Labill.—Penshurst (on the ground; E. Cheel; April, 1907).

Lysurus australiensis Cooke & Massee.—Penshurst (on the ground; E. Cheel; October, 1906). For the only other New South Wales record known to me, see Hawkesbury Agric. Coll. Journal, ii., pp. 26, 119.

NIDULARIACEÆ.

Cyathus fimetarius DC.—Toongabbie (on cow dung; J. G. Fletcher; August, 1904; No.5): Penshurst (E. Cheel; March, 1905); Botanic Gardens, Sydney (E. Cheel; March, 1907). Previously only recorded for Queensland.

UREDINACEÆ.

Puccinia malvacearum Mont.—Botanic Gardens, Sydney, and Centennial Park (on Hollyhock leaves; E. Cheel; No.10).

Puccinia chrysanthemi Roze.—Penshurst (on Chrysanthemum leaves; E. Cheel; 1901; No.48).

Puccinia helianthi Schw.—Botanic Gardens, Sydney (on Sunflower leaves; E. Cheel).

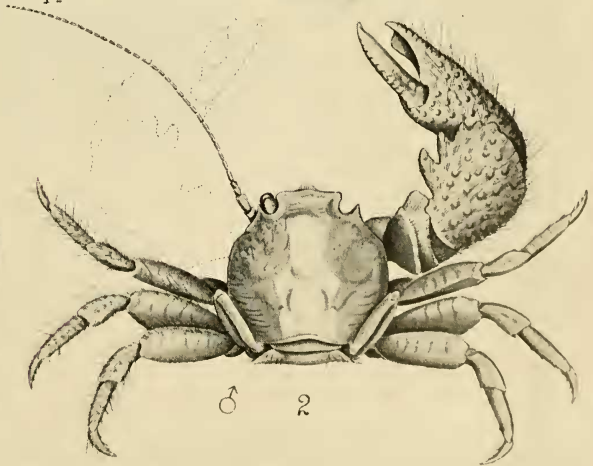
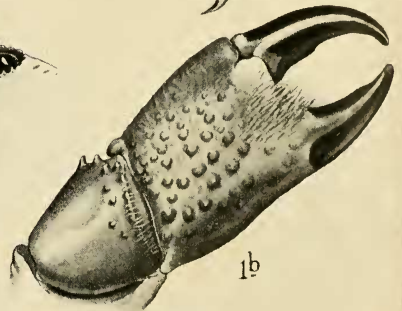
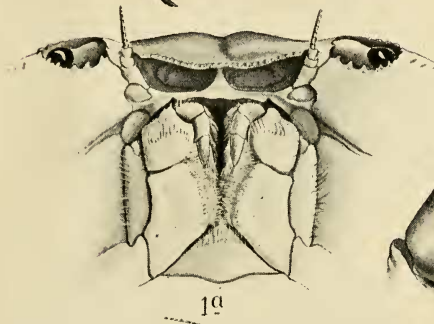
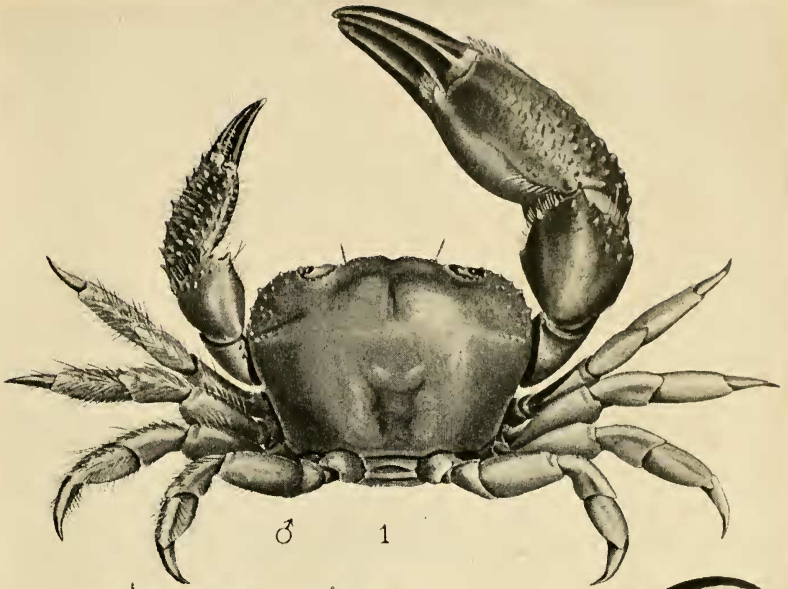
HYPOCREACEÆ.

Cordyceps Robertsii Hook.—Auckland, N.Z. (on a caterpillar; W. Gardner; November, 1901).

Sphaerostilbe cinnabarina Ful.—Centennial Park and Botanic Gardens, Sydney (on dead branches of *Pittosporum undulatum*, *Ficus rubiginosa*, and *Aesculus rubicunda*; E. Cheel; May, 1900; No.49).

XYLARIACEÆ.

Poronia oedipus Mont.—Penshurst (on horse dung; E. Cheel; December, 1900; No.18).



Fullloch

FIGS. 1, 1a, 1b: *ERIPHIA NORFOLCENSIS*, SP. N.

FIGS. 2, 2a, *PACHYCHELES LIFUENSIS* BORR